



www.ILWorkInfo.com

Workforce Information Update WIA 5 (Kane, Kendall & DeKalb Counties)

**Economic Information and Analysis
Illinois Department of Employment Security**



www.IDES.state.il.us

Norman S. Kelewitz
Labor Market Analyst
Norman.Kelewitz@Illinois.gov
(630) 844-8455 Ext. 276



WI A 5
(Kane, Kendall, Dekalb)

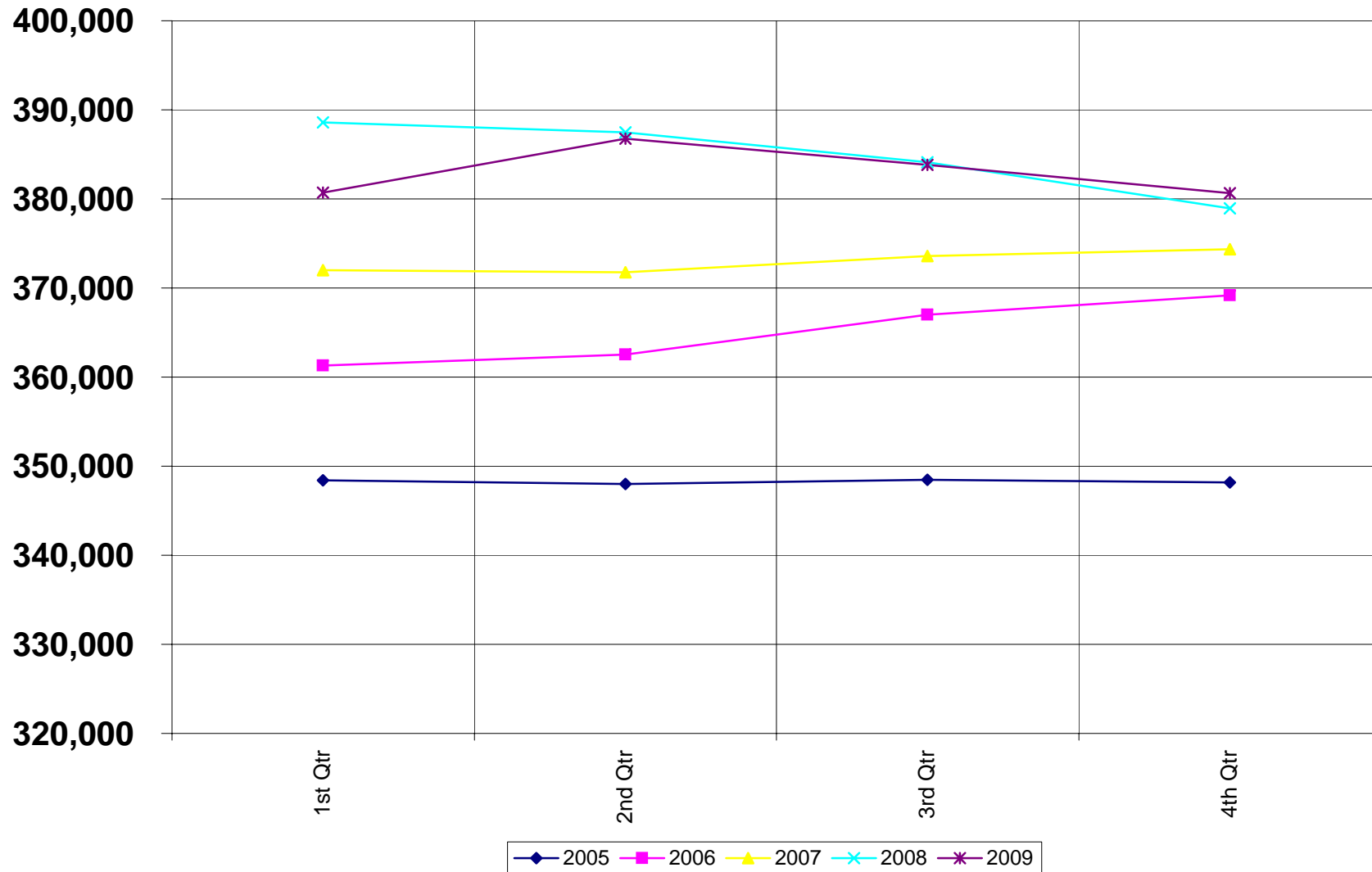
Labor Force & Employment
Quarterly Information

| Industry | 4th Qtr 08 | 3rd Qtr 09 | 4th Qtr 09 | Over the Qtr | | Over the Year | |
|--|----------------|----------------|----------------|---------------|--------------|----------------|--------------|
| | | | | # | % | # | % |
| LABOR FORCE DATA (*) | | | | | | | |
| Civ. Lab. Force | 378,941 | 383,810 | 380,640 | -3,170 | -0.8 % | 1,699 | 0.4 % |
| Employment | 354,658 | 344,550 | 340,760 | -3,790 | -1.1 % | -13,898 | -3.9 % |
| Unemployment | 24,283 | 39,260 | 39,880 | 620 | 1.6 % | 15,597 | 64.2 % |
| Percentage | 6.4 % | 10.2 % | 10.5 % | | | | |
| Total Non-Ag Employment | 278,400 | 264,610 | 263,150 | -1,460 | -0.6% | -15,250 | -5.5% |
| Total Private | 228,530 | 219,590 | 215,070 | -4,520 | -2.1% | -13,460 | -5.9% |
| Goods Producing | 57,280 | 51,720 | 50,370 | -1,350 | -2.6% | -6,910 | -12.1% |
| Service-Providing | 221,110 | 212,890 | 212,780 | -110 | -0.1% | -8,330 | -3.8% |
| Constr., Mining, Nat. Res. | 15,830 | 14,270 | 12,920 | -1,350 | -9.5% | -2,910 | -18.4% |
| Manufacturing | 41,450 | 37,450 | 37,450 | 0 | 0.0% | -4,000 | -9.7% |
| Wholesale trade | 13,400 | 13,310 | 13,040 | -270 | -2.0% | -360 | -2.7% |
| Retail Trade | 31,300 | 30,340 | 30,750 | 410 | 1.4% | -550 | -1.8% |
| Transportation, Warehousing, and Utilities | 7,340 | 7,110 | 7,060 | -50 | -0.7% | -280 | -3.8% |
| Financial Activities | 11,610 | 11,310 | 11,250 | -60 | -0.5% | -360 | -3.1% |
| Professional and Business Services | 35,840 | 33,780 | 33,220 | -560 | -1.7% | -2,620 | -7.3% |
| Educational and Health Services | 33,030 | 32,000 | 30,990 | -1,010 | -3.2% | -2,040 | -6.2% |
| Leisure and Hospitality | 23,820 | 25,560 | 24,380 | -1,180 | -4.6% | 560 | 2.4% |
| Other Services | 9,810 | 9,650 | 9,330 | -320 | -3.3% | -480 | -4.9% |
| Government | 49,870 | 45,020 | 48,080 | 3,060 | 6.8% | -1,790 | -3.6% |

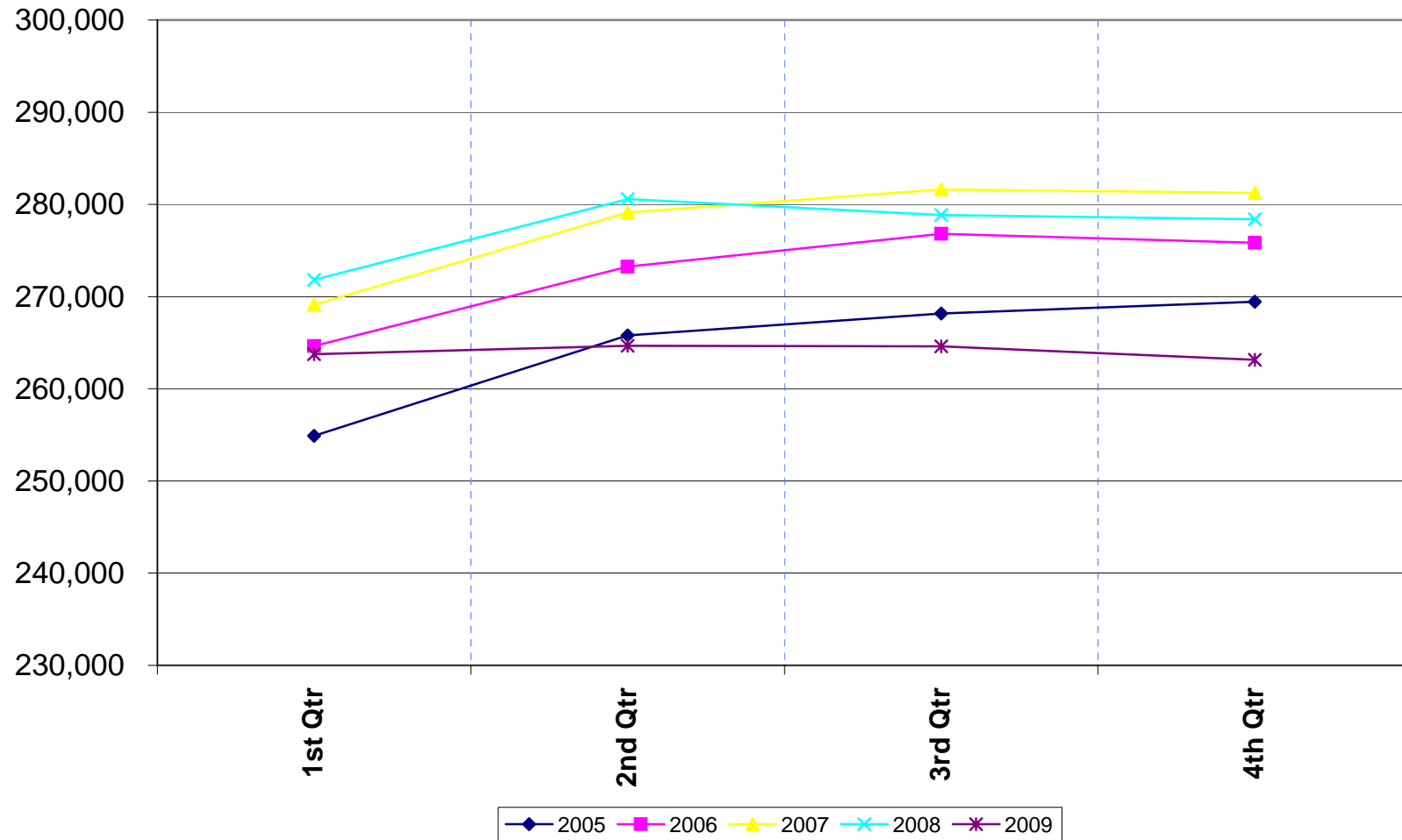
Labor Force Information
Quarterly Information

WIA 5
(Kane, Kendall, DeKalb)

Total Labor Force



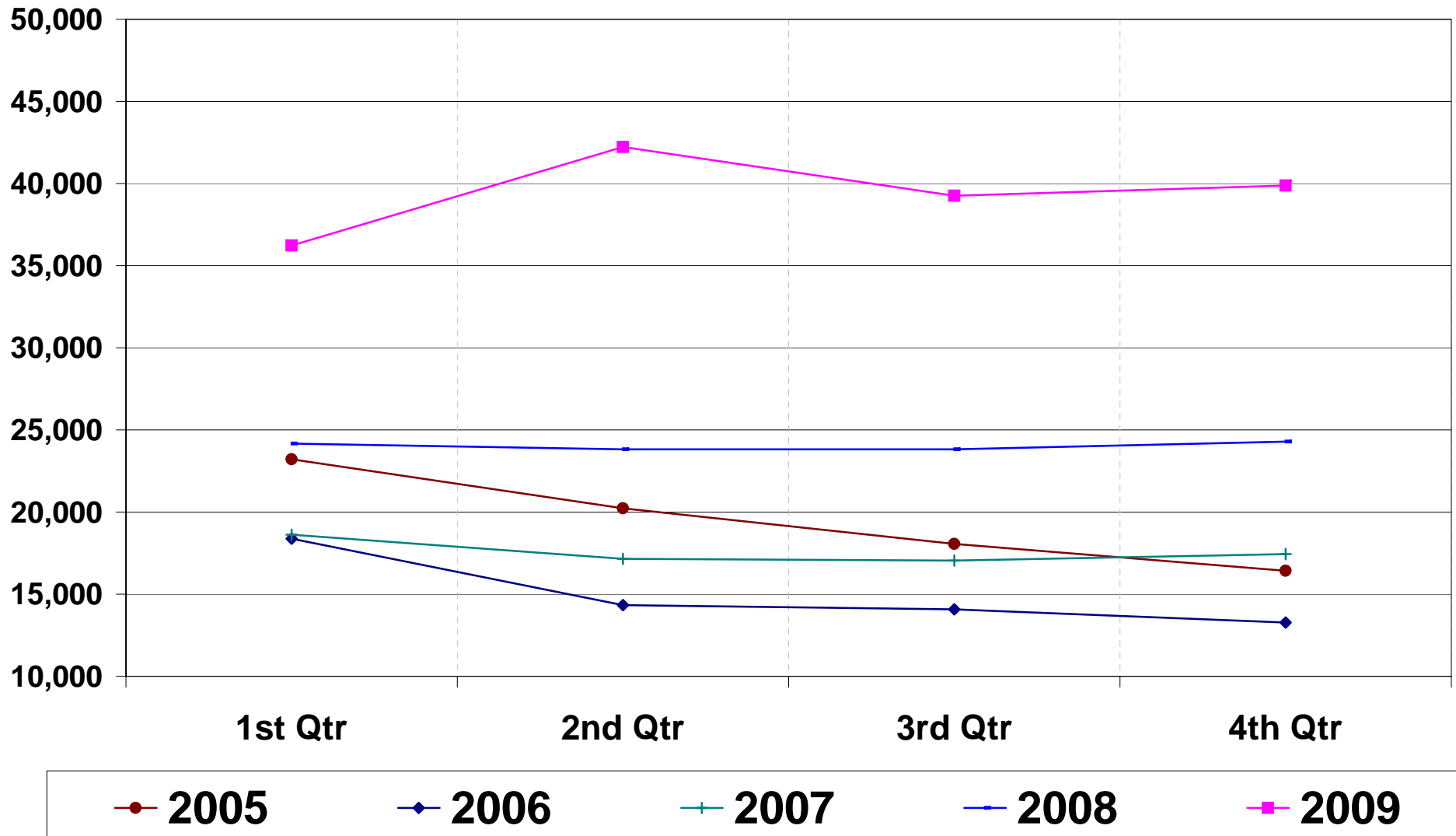
Total Industry Employment Quarterly Information



Labor Force Information Quarterly Information

WIA 5
(Kane, Kendall, Dekalb)

Number of Unemployed

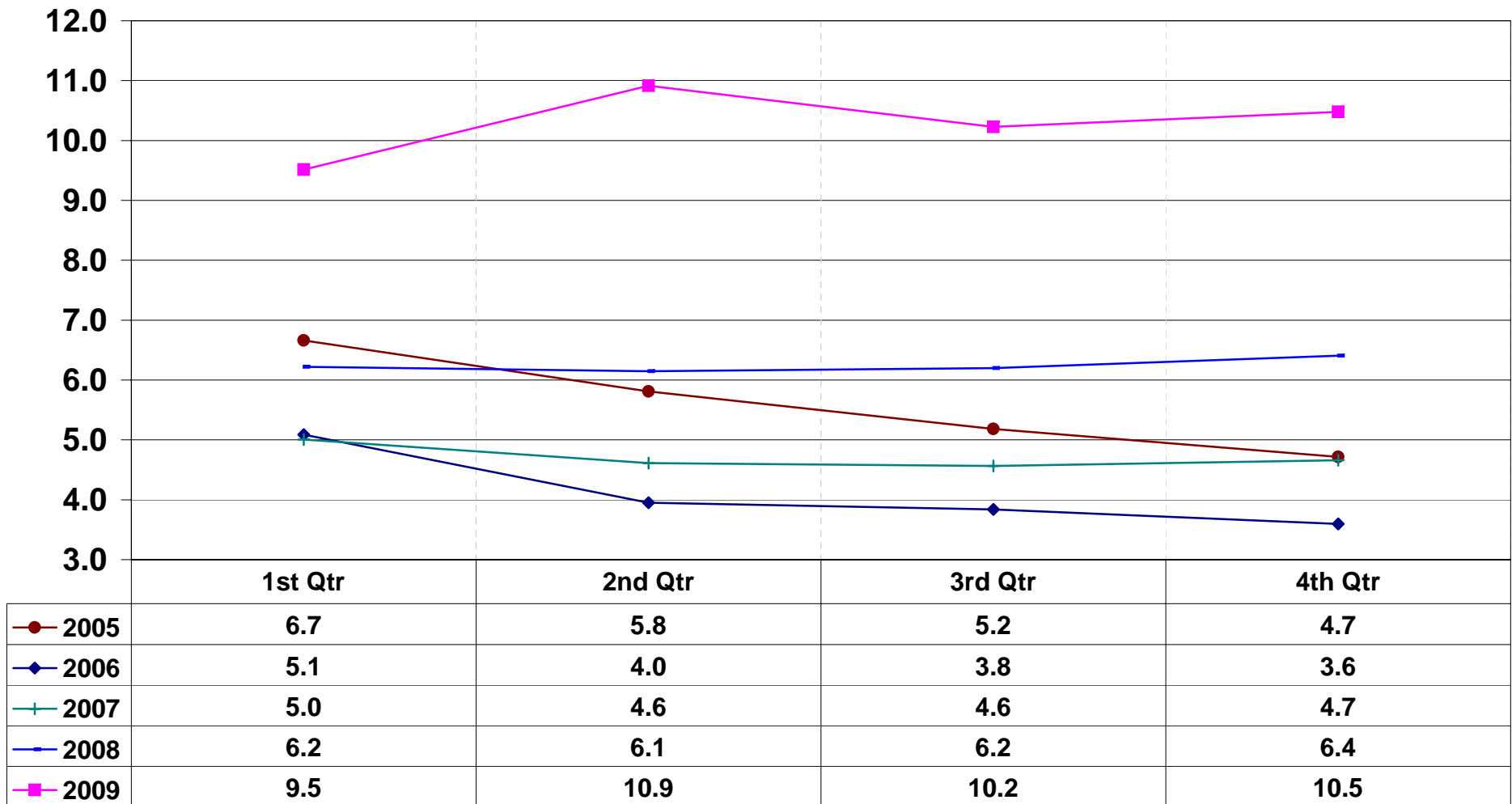


Labor Force Information
Quarterly Information

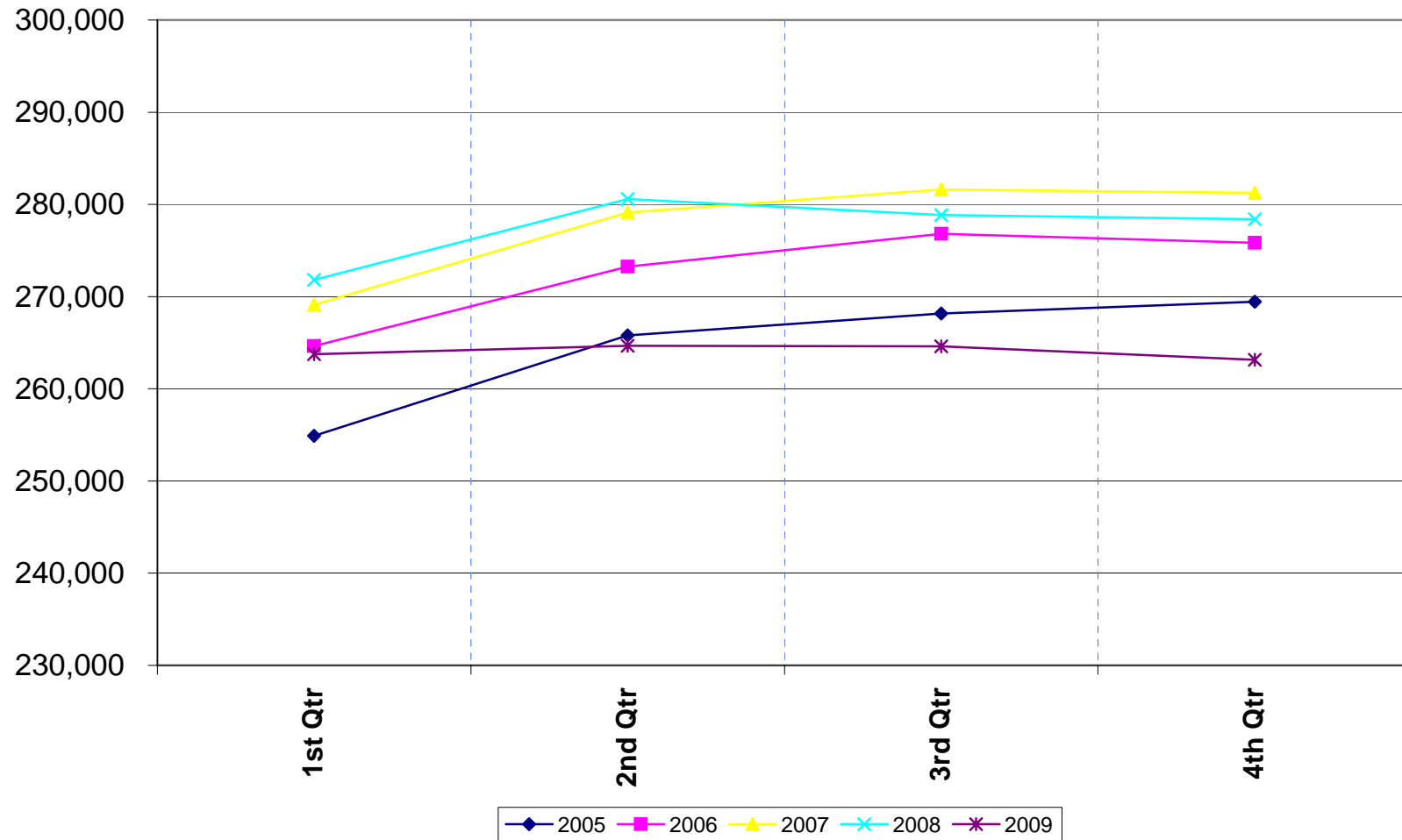
WIA 5

(Kane, Kendall, DeKalb)

Unemployment Rates



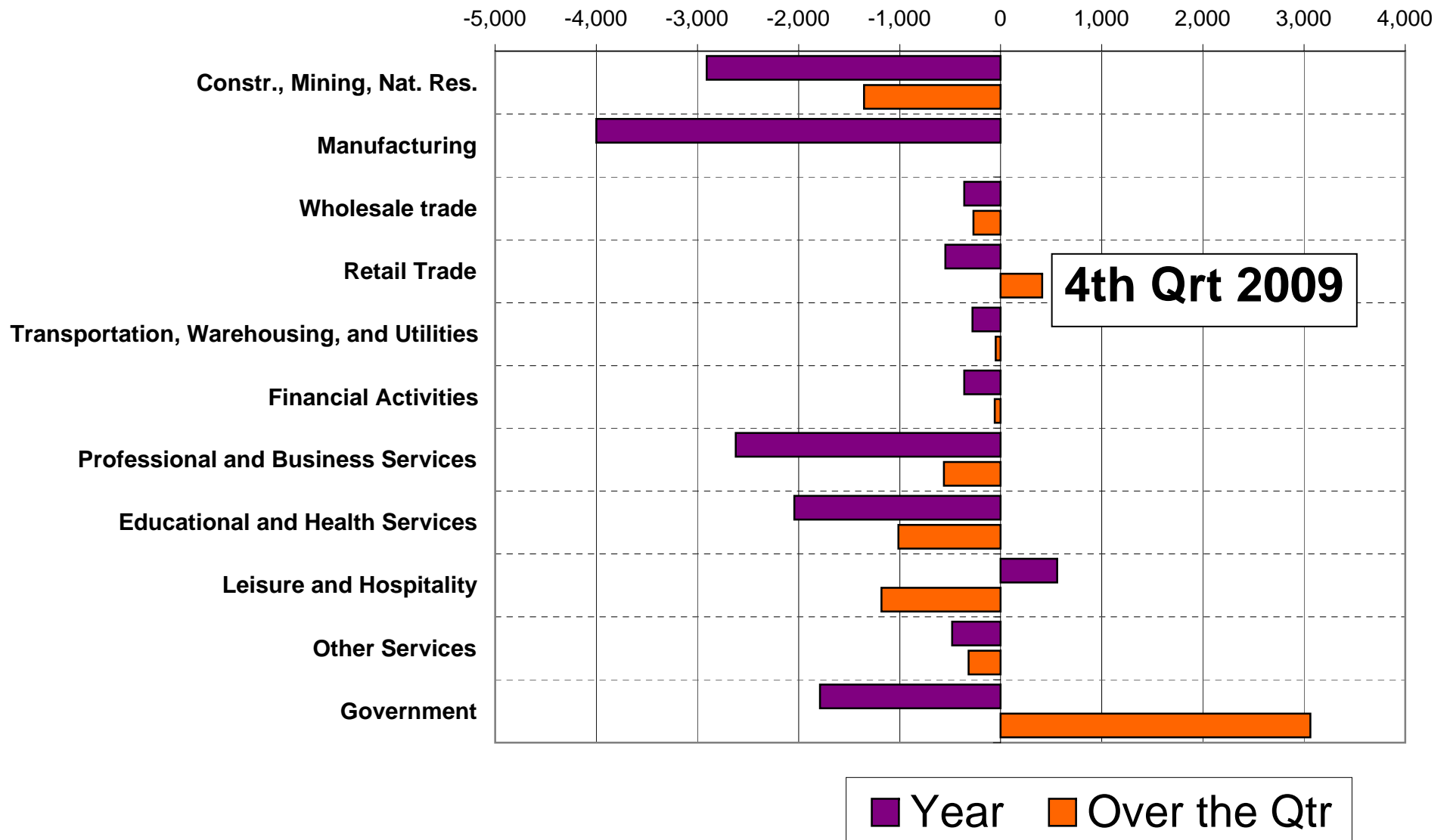
Total Industry Employment Quarterly Information



Labor Force Information

Quarterly Information

WIA 5
(Kane, Kendall, DeKalb)

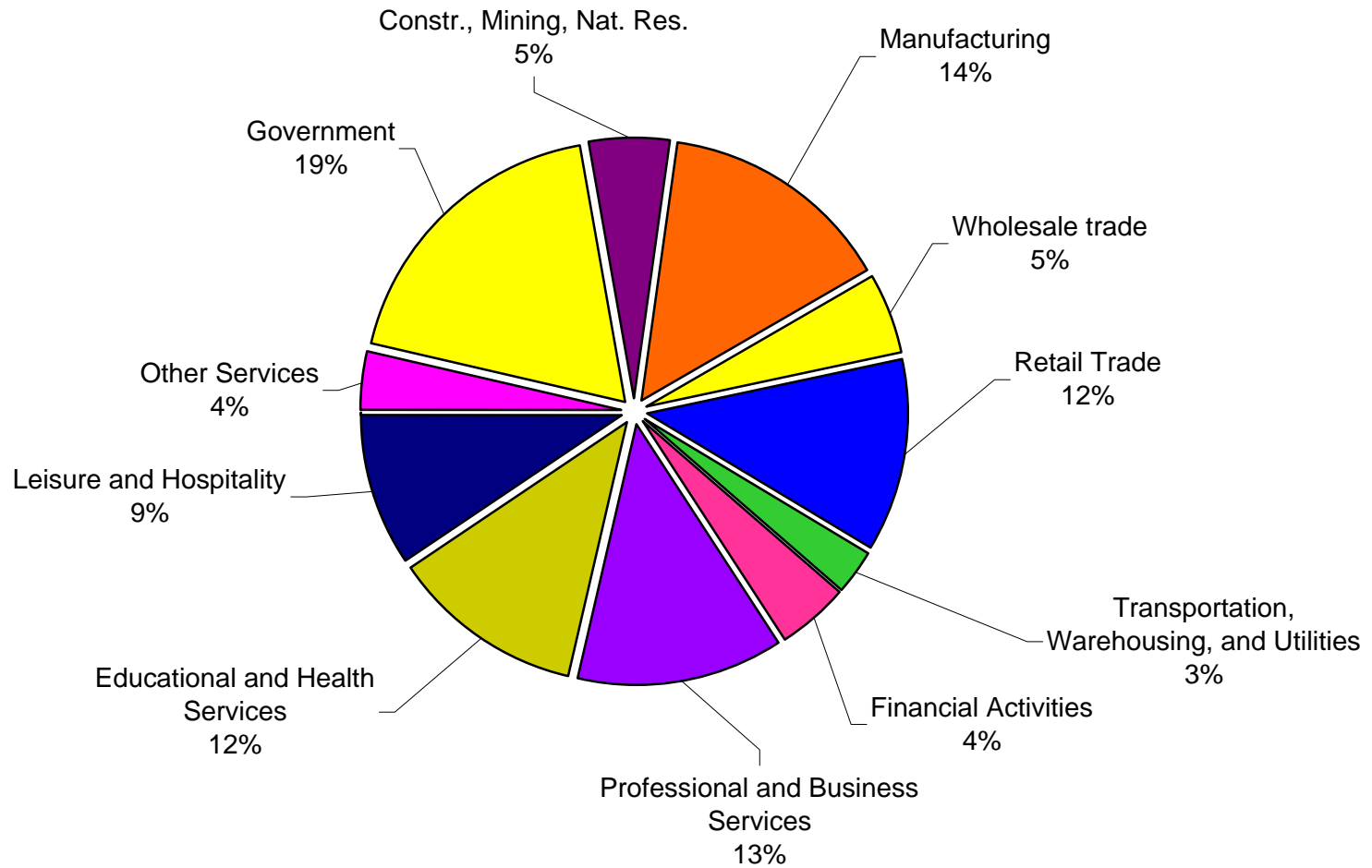


Current Employment Statistics:

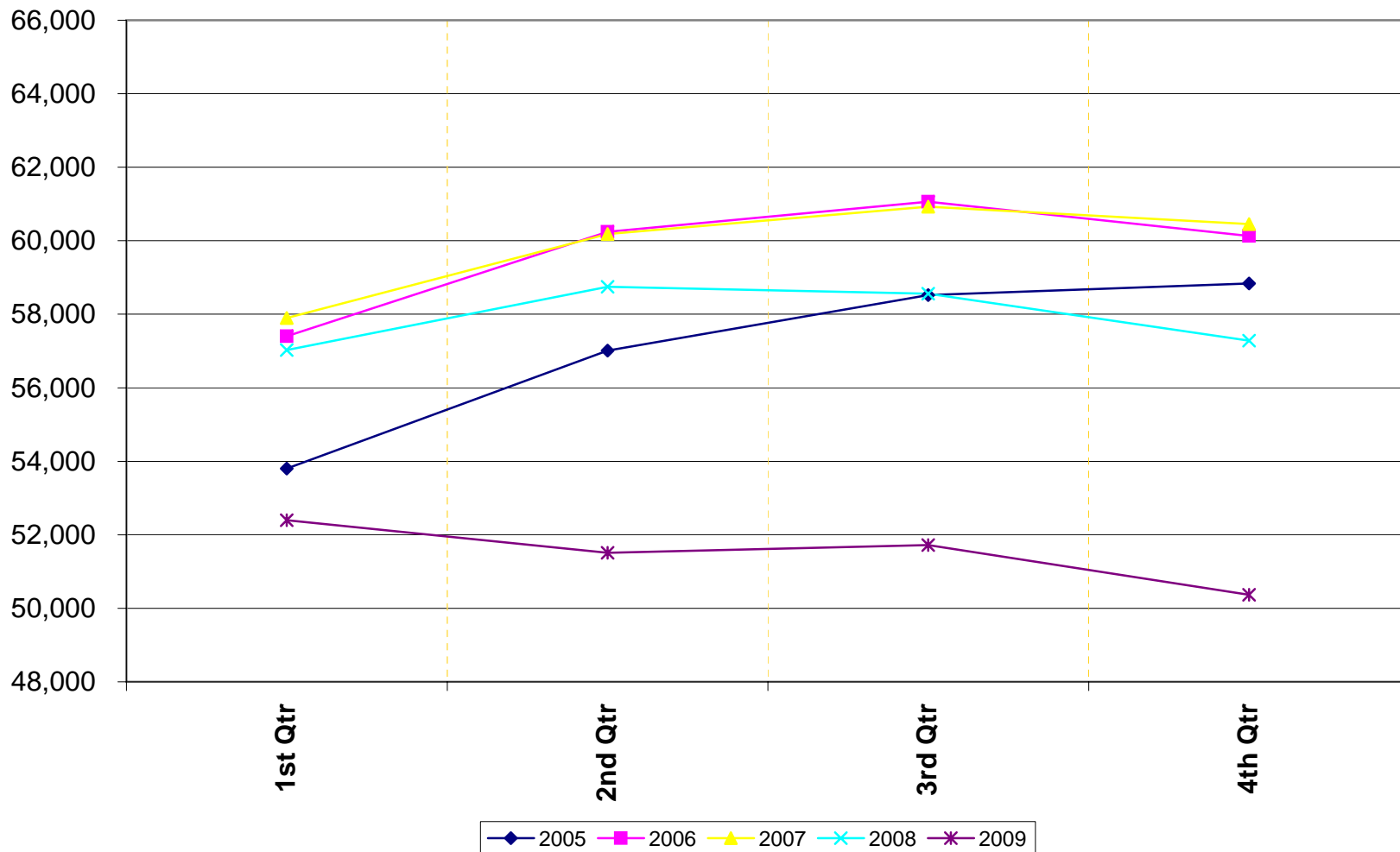
WIA 5

(Kane, Kendall, Dekalb)

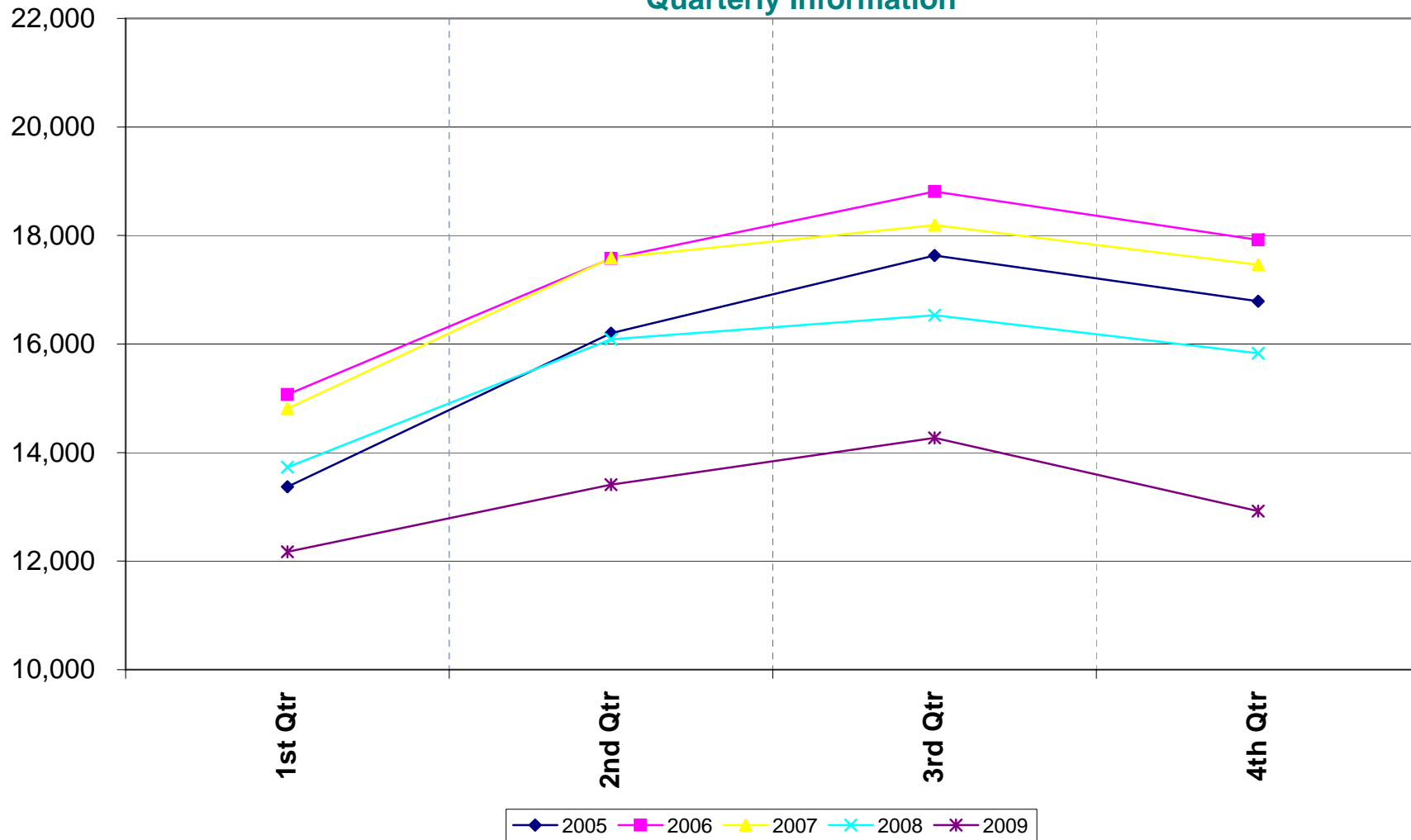
Employment by Industry 4th Quarter 2009



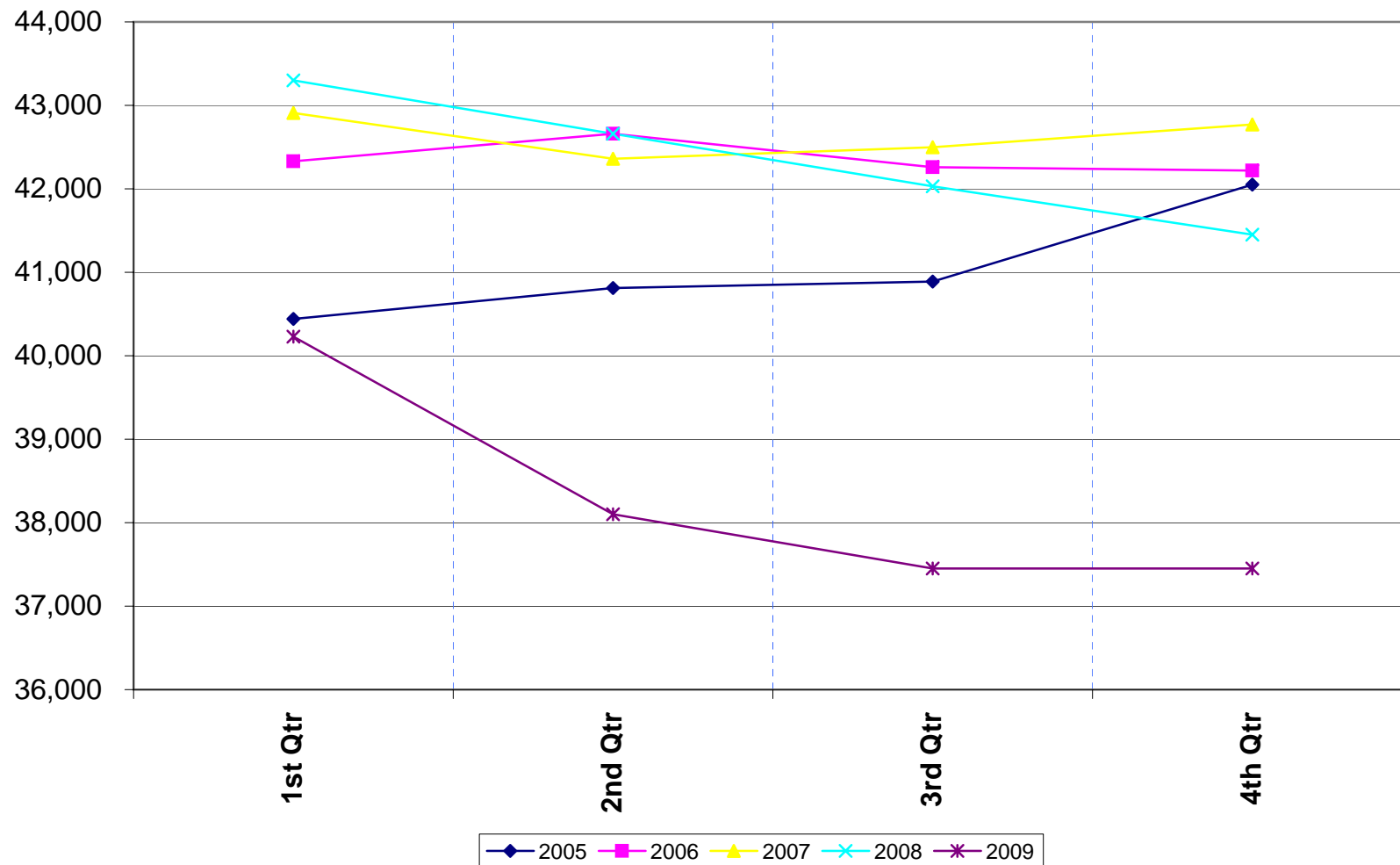
Employment in Goods Producing Industries Quarterly Information



Construction-Mining Employment Quarterly Information



Manufacturing Employment Quarterly Information



Employment in Service Industries Quarterly Information

